



# Wilton Carpets

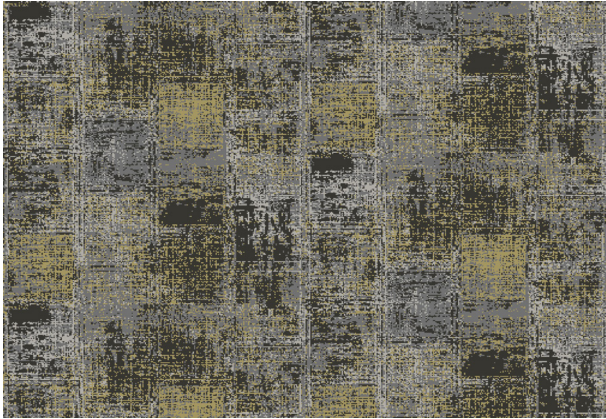
## AXMINSTER STOCK

A collection for immediate dispatch

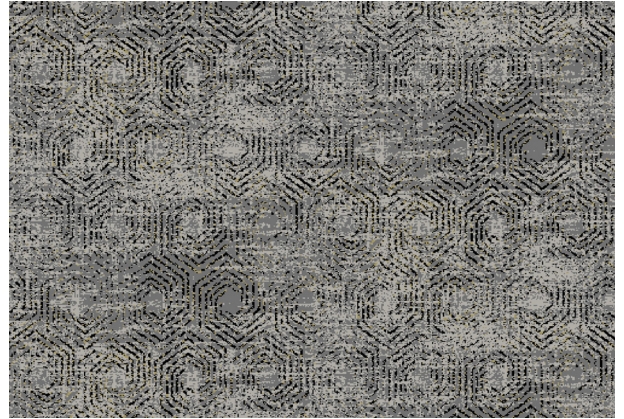




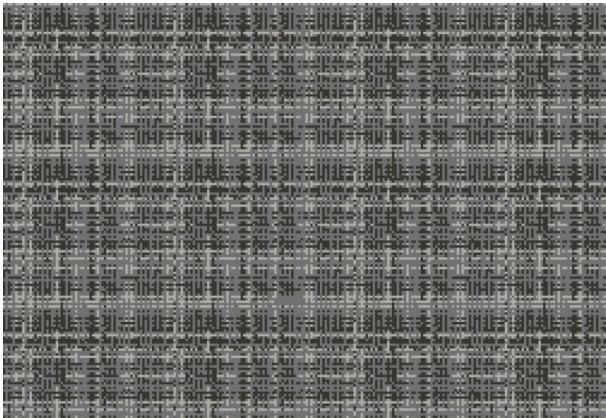
Urban Terrain Karma 28572-89 0.91m SM 8 Row



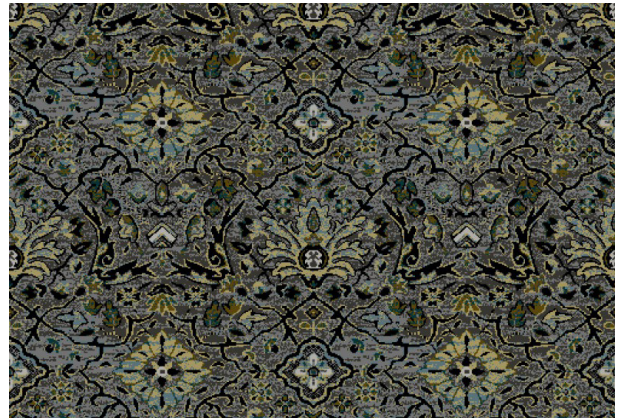
Urban Contour Pebble 28575-73 0.91m SM 8 Row



32799-77 0.46m SM 7 Row



33023-75 0.75m SM 7 Row



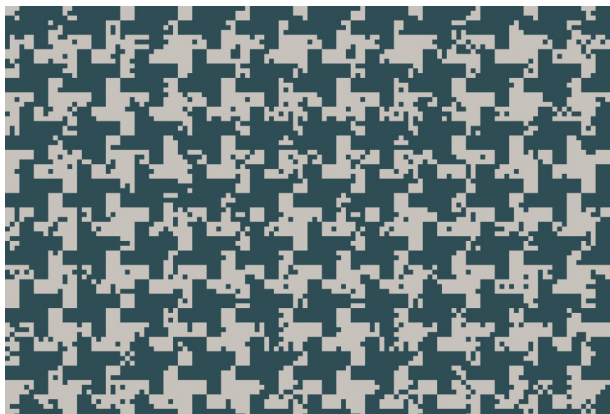
01722 746 000 [marketing@wiltoncarpets.com](mailto:marketing@wiltoncarpets.com)





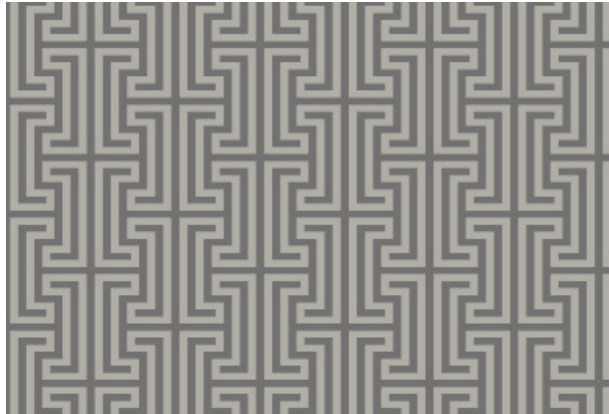
Cabochon Garland 33041-32

0.91m SM 7 Row



Spirit Mettle Granite 29329-76

0.20m SM 8 Row





Kinetic Pulse 32694-13

1.14m SM 7 Row



Kinetic Signal 32693-73

0.94m SM 7 Row



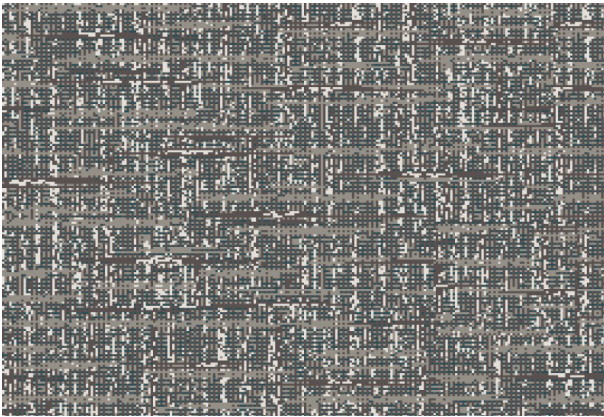
01722 746 000 [marketing@wiltoncarpets.com](mailto:marketing@wiltoncarpets.com)





01722 746 000 [marketing@wiltoncarpets.com](mailto:marketing@wiltoncarpets.com)

Hamam Patchouli 33052-73 1.03m SM 8 Row



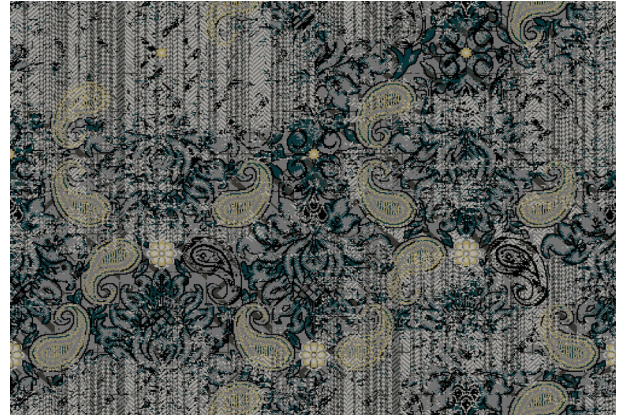
Hamam Mandarin 33048-28 0.89m SM 8 Row



Hamam Pomegranate 33056-26 0.91m SM 8 Row



33296-75 1.21m SM 8 Row





# Technical ---

Construction	Axminster
Pile content	80% wool 20% nylon
Pitch	27.6 per 10 cm (7 per inch)
Rows	27.6 per 10 cm (7 per inch) / 31.5 per 10 cm (8 per inch)
Pile weight	7 row: 1033gm m <sup>2</sup> / 30.5 oz/sq yd. 8 row: 1180gm m <sup>2</sup> / 34.8 oz sq yd.
Backing	Polyester/polypropylene
Backing treatment	SBR Latex
Width	4.00m (13 ft 1.2") Broadloom – BS3655 (Melrose designs are 3.66m / 12ft wide)
Total thickness	9.00mm +/- 1.00 mm (0.35 inches) ISO 1765 (BS 4223)
Suitability for use	Heavy contract
Fire test	Radiant Panel ISO 9239-1 IMO
Fire classification	EN 14041 2004 Classification Cf s1 B Flooring
Colour fastness	Wet 3-4 (Scale 1-5).
Installation	In accordance with BS 5325:2001 or any later revision – Installation of textile floor coverings – Code of practice.
Maintenance	Please refer to The Wilton Carpet Factory Ltd for full maintenance advice.

Specifications are subject to normal commercial tolerances. A fully-detailed specification is available if required

## ENVIRONMENTAL ACCREDITATIONS

We're dependent on British sheep and the grass they graze across the country, so it makes sense to look after our environment. In recognition, we're ISO 14001 and BREEAM compliant.

## FLAMMABILITY

Our carpets have passed Radiant panel ISP 9239-1.

## PILE AND BACKING

Our yarn is 80% wool and 20% nylon, providing the optimum blend of comfort, sound and heat insulation, resilience and long lifetime value. The backing is woven as an integral part of the carpet weaving process, making our carpets uncommonly durable, even in medium to heavy contract applications.

## QUALITY ASSURED

It's quality all the way through the business and we're ISO 9001 accredited to certify that. We also have Cfl s1 (C Flooring) certification and our carpets have passed the Radiant Panel ISP 9239-1 flammability test.