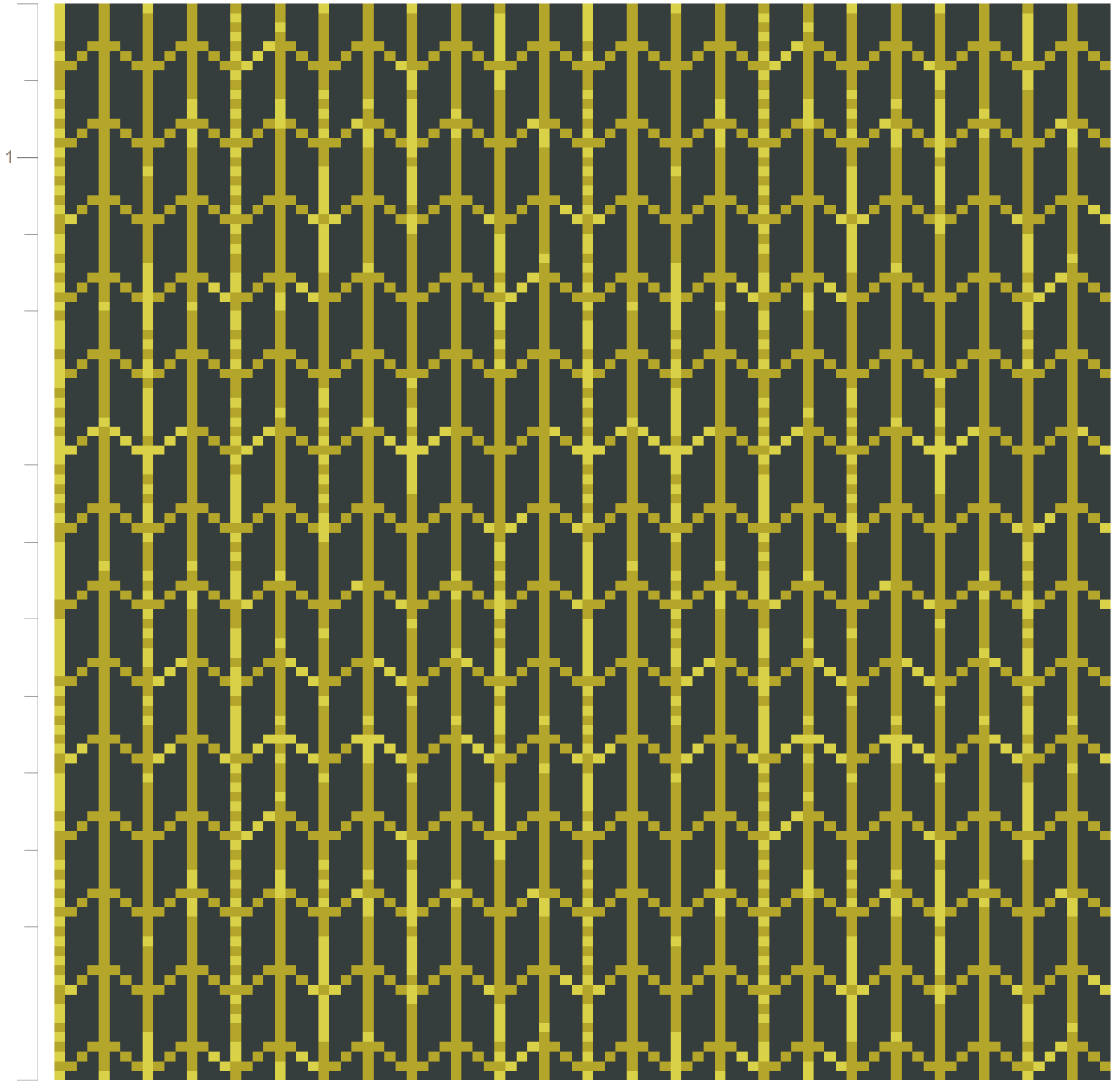





WILTON CARPETS

COMMERCIAL



Numerical units represent 12" (30cm)

Design ID: BZ650 ES 2
 Design Size: Width x Length 6.86in x 10in
 Metric: 0.17M x 0.25M
 Ends*Rows: 48 x 80
 Quality: 7 x 8 per Inch
 Match: Straight
 Print Scale: 1:1.88
 Repeats: 2 by 1.4
 Print Date: December 14, 2016

CP7382 17J 1 
 IC6005 2 
 44/16 29I 3 

© The Wilton Carpet Factory Ltd

The Wilton Carpet Factory Ltd Minster Street, Wilton, Salisbury SP2 0AY

Tel:01722 742890 Fax 01722 742923 E-mail: sales@wiltoncarpets.com or designstudio@wiltoncarpets.com