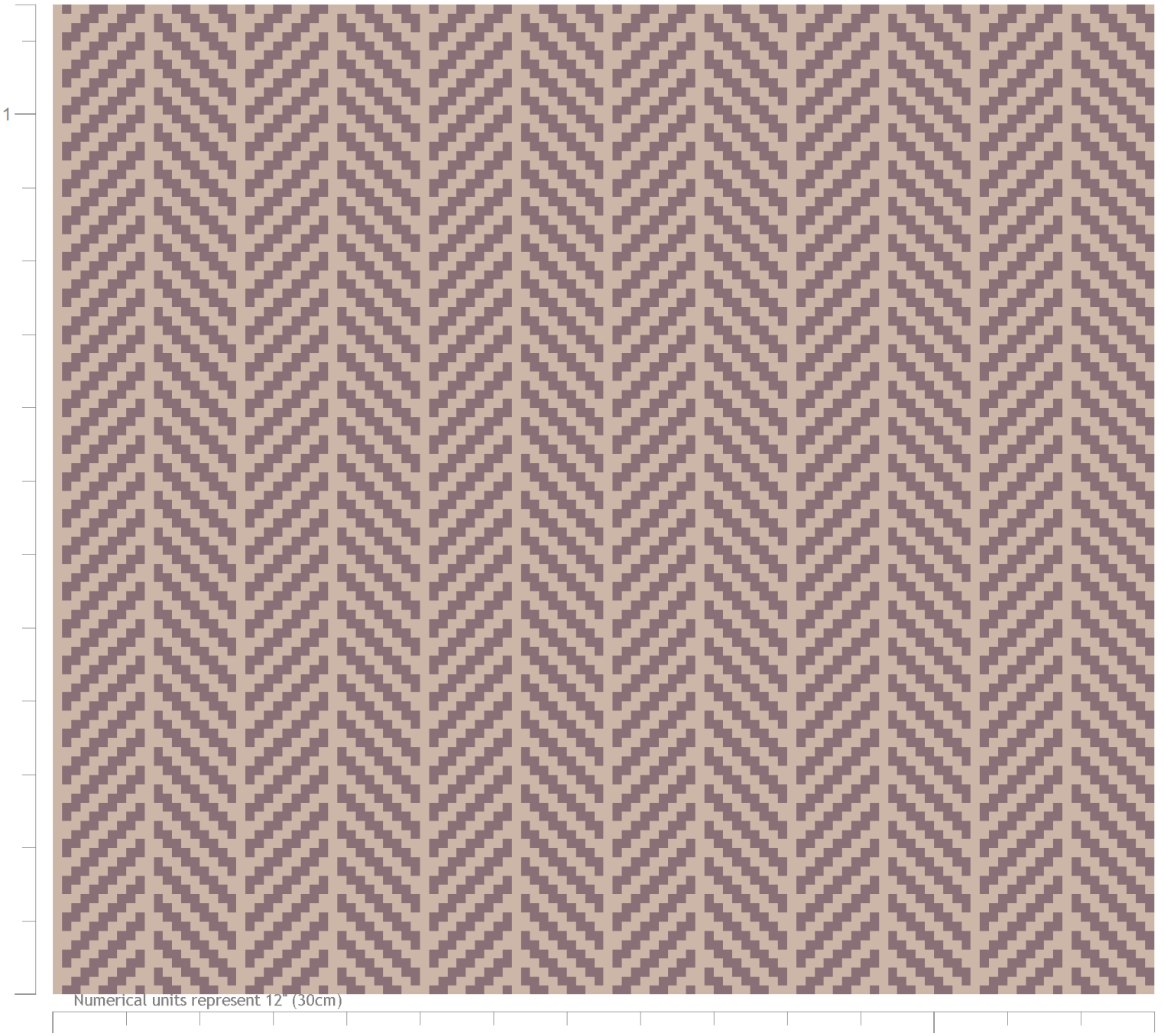




WILTON CARPETS

COMMERCIAL

Herringbone. Poole.



Design ID: 50265-345
 Design Size: Width x Length 2.50in x 0.50in
 Metric: 0.06M x 0.01M
 Ends*Rows: 20 x 4
 Quality: 8 x 8 per Inch
 Match: Straight
 Print Scale: 1:2 (Half Scale)
 Repeats: 6 by 27
 Print Date: June 27, 2019

93/07 11M CY 1 
 65/85 23C CY 2 

© The Wilton Carpet Factory Ltd

The Wilton Carpet Factory Ltd Minster Street, Wilton, Salisbury SP2 0AY

Tel:01722 742890 Fax 01722 742923 E-mail: sales@wiltoncarpets.com or designstudio@wiltoncarpets.com