



# WILTON CARPETS



*Inspired design. Made to last.*

LINDISFARNE

# LINDISFARNE

The rugged crags and high moorlands of the Northumbrian countryside inspire Lindisfarne by Wilton Carpets, a captivating three-colour herringbone style that's perfect for a classic feel in guestrooms, corridors and meeting rooms.

The wool-rich Lindisfarne comes in six versatile colourways to complement modern and traditional settings, with colours such as Otterburn, Kielder and Craster looking towards the shifting natural light and ever-changing palettes of beauty spots throughout this ancient kingdom.

Crafted in a 38oz quality suitable for heavy contract use, this long-lasting Ready to Go tufted carpet is available immediately from stock. Blending the quality of wool-rich carpet with the value of a tufted construction, Lindisfarne is ready to deliver on-point style versatile enough for almost any hospitality environment.

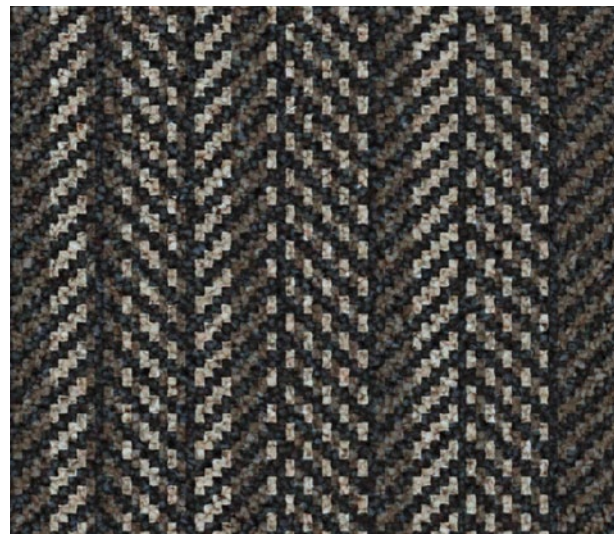






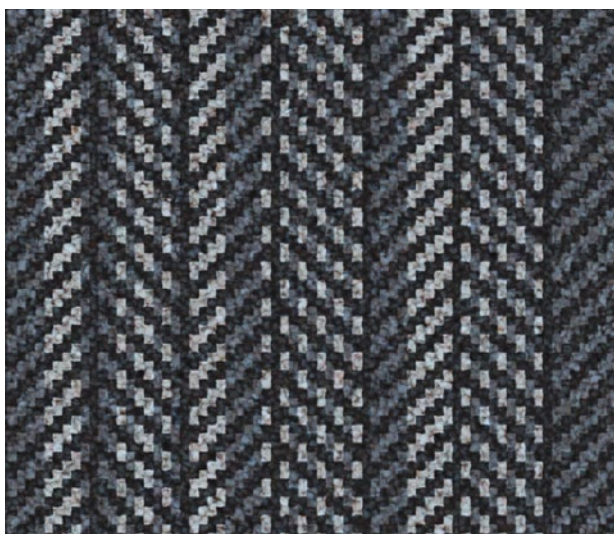
otterburn

320/50264



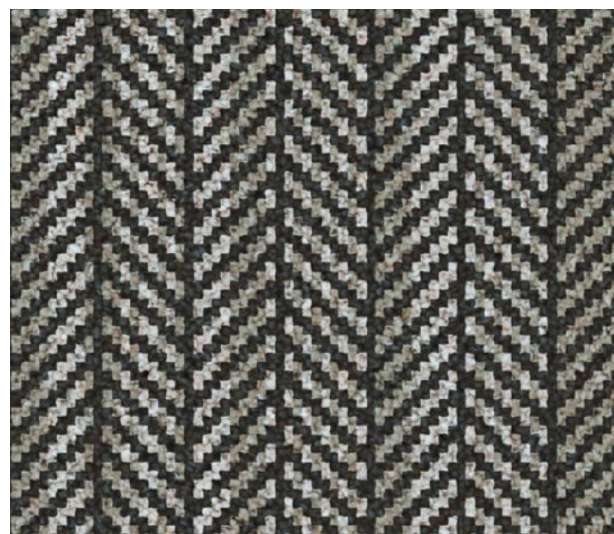
kielder

324/50264



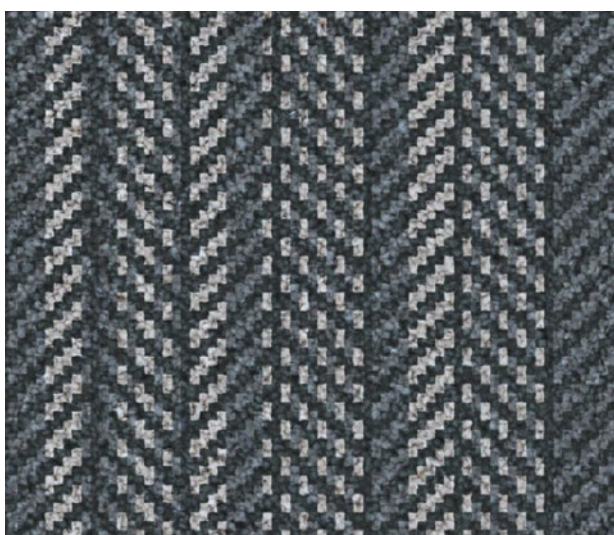
budle

321/50264



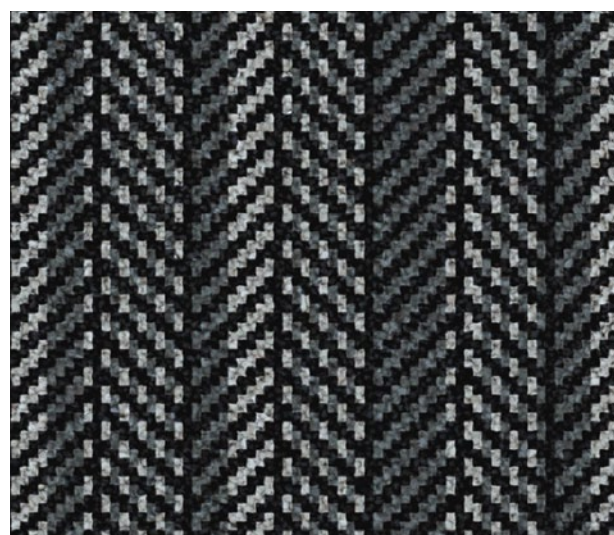
haggerston

325/50264



amble

322/50264



craster

326/50264

# LINDISFARNE

|                        |  |
|------------------------|--|
| Construction           | Tufted   |
| Pile content           | 80% Wool 20% Nylon – BS 3655                                   |
| Pitch                  | 31.5 per 10cm (8 per inch)                                     |
| Pile weight            | 1288gm m <sup>2</sup> / 38oz sq yd – ISO 8543 (BS 4223)        |
| Backing – secondary    | Synthetic / Jute   |
| Width                  | 4.00m (13ft 1½”) Broadloom – BS 3655                           |
| Total carpet thickness | 10.00mm +/- 1.00mm (0.35 inches) ISO 1765 (BS 4223)            |
| Total carpet weight    | 2468gm m <sup>2</sup> +/- 5% (72.8oz sq yd) ISO 8543 (BS 4223) |
| Suitability for use    | Heavy Contract   |

The above specifications are subject to normal commercial tolerance. A fully detailed specification for this product can be made available by application to The Wilton Carpet Factory Limited.



CE EN 14041 2004 Classification Cfl s1 (C Flooring)

|                              |   |
|------------------------------|---|
| Colour fastness              | Wet 3-4 (Scale 1-5)   |
| Installation and maintenance | Please refer to the factory for full installation and maintenance advice. |



## WILTON CARPETS

### The Wilton Carpet Factory Limited

Minster Street, Wilton, Salisbury  
Wiltshire SP2 0AY

t 01722 746000 f 01722 742923

e sales@wiltoncarpets.com

[www.wiltoncarpets.com](http://www.wiltoncarpets.com)

ISO 9001 (2015) Quality Assurance Certified



Designed  
and made  
in Britain

© Copyright The Wilton Carpet Factory Limited All copyright, design rights and intellectual property rights existing in our designs are and will remain the property of The Wilton Carpet Factory Limited. Any infringement of these rights will result in appropriate legal action. Colours are reproduced within the limits of the printing process.