



WILTON CARPETS



Inspired design. Made to last.

SPIRIT

SPIRIT

Spirit brings all-over interpretations of repeating geometrics inspired by Greek key patterns for a look that's impressively versatile, thoroughly modern and perfect for hotels seeking a glamorous, deco feel.

In Mettle, Moxie and Magic, Wilton Carpets presents three powerful patterns that add poise and purpose, each available in rich and luscious colour combinations discovered in the Creations palette. Spirit's allure is intoxicating and captivating.

Crafted in the Wiltshire countryside in a quality suitable for heavy contract use, this enduring woven axminster Ready to Go carpet is available with a fast turnaround.

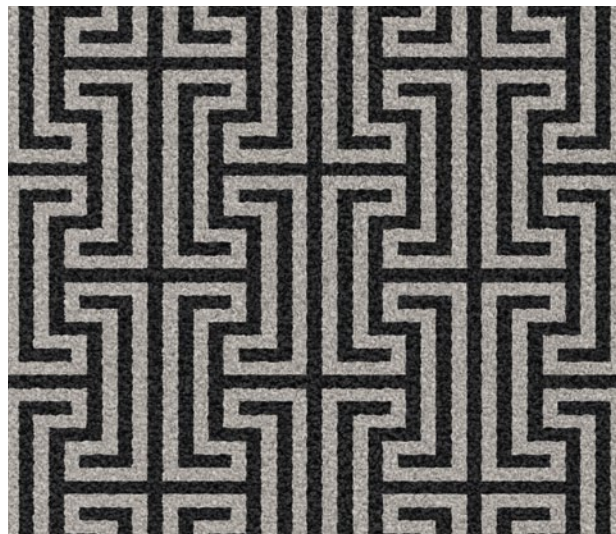






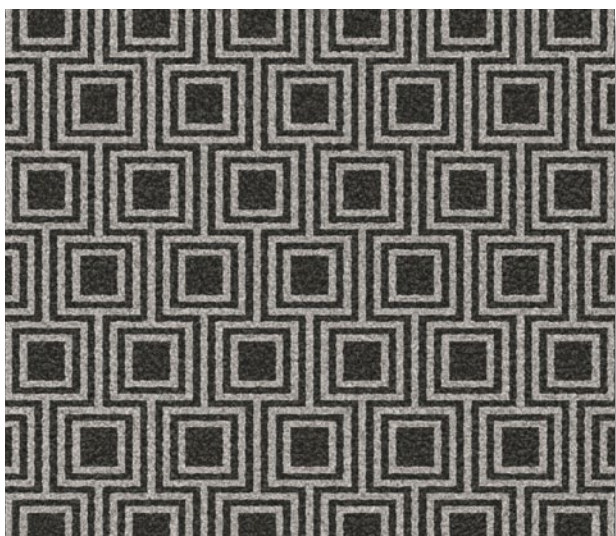
SPIRIT METTLE granite

76/29329



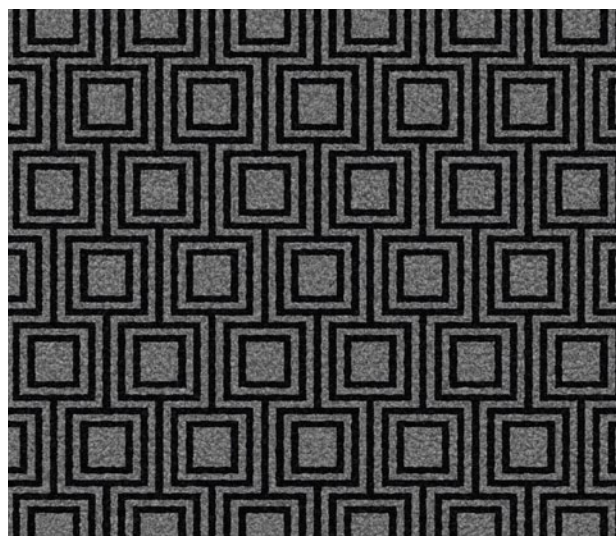
SPIRIT METTLE pebble

73/29330



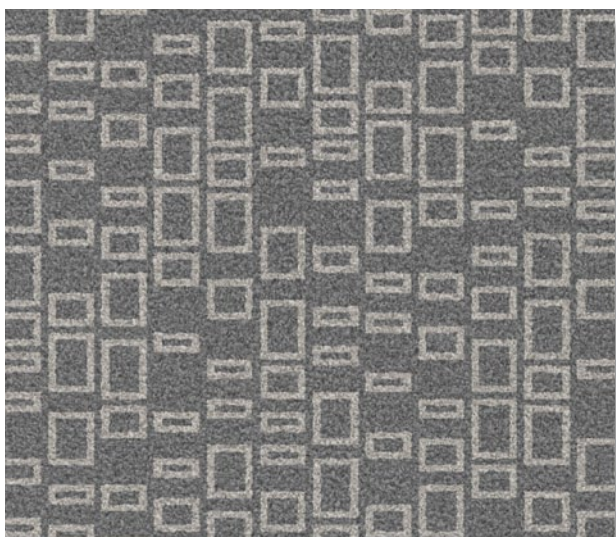
SPIRIT MOXIE gun metal

77/29333



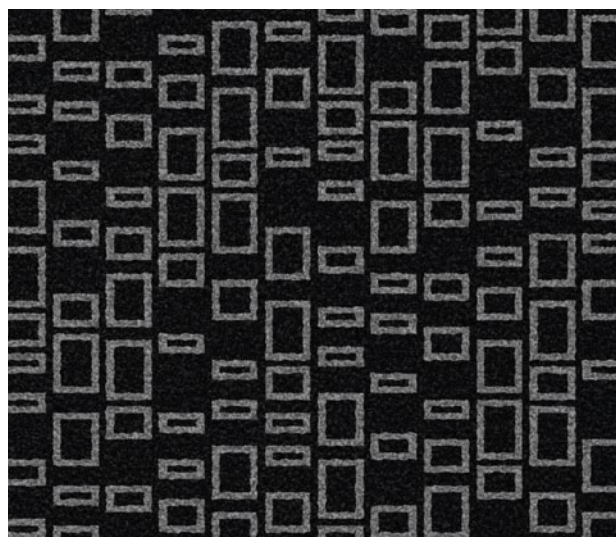
SPIRIT MOXIE granite

76/29334



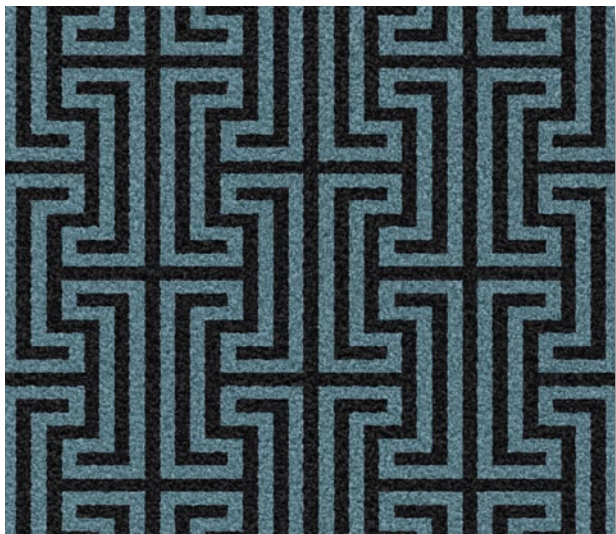
SPIRIT MAGIC granite

76/29337



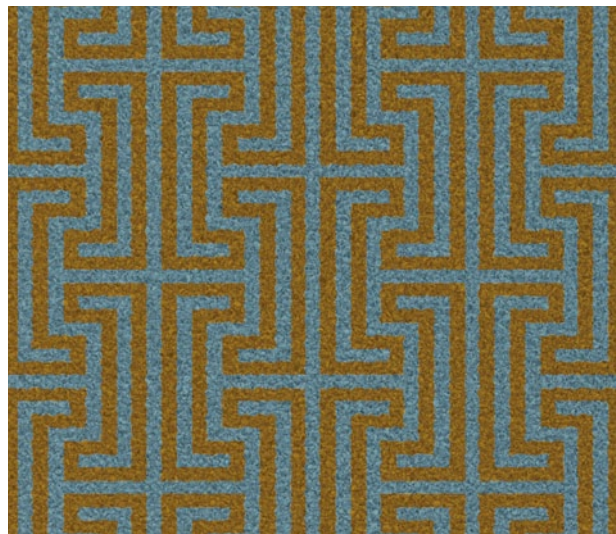
SPIRIT MAGIC black

13/29338



SPIRIT METTLE **fjord**

300/29331



SPIRIT METTLE **demerara**

46/29332



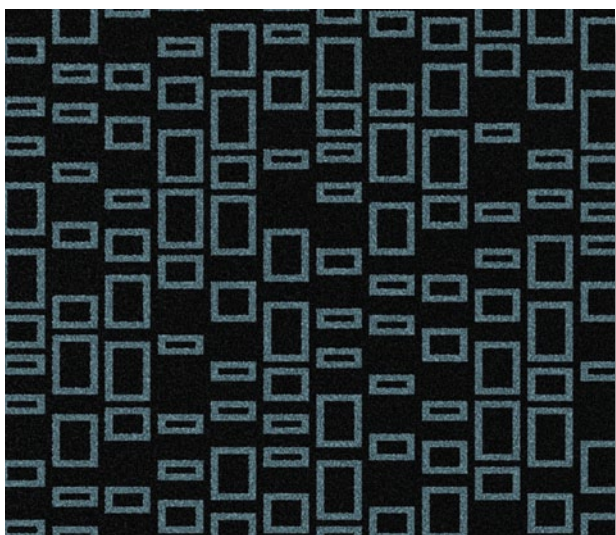
SPIRIT MOXIE **black**

13/29335



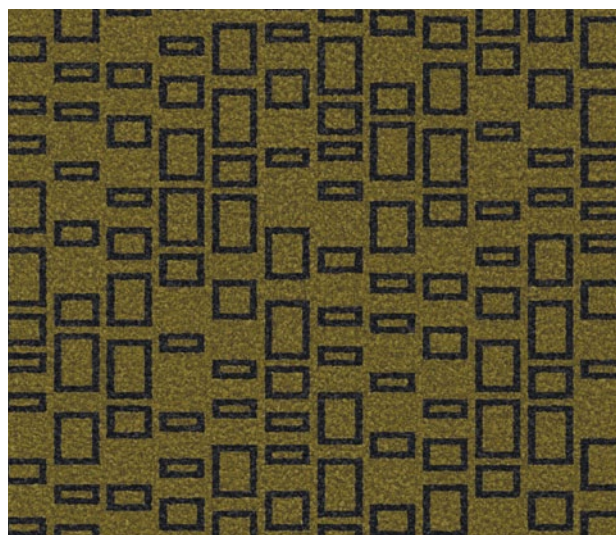
SPIRIT MOXIE **lime zest**

88/29336



SPIRIT MAGIC **fjord**


300/29339



SPIRIT MAGIC **lime zest**

88/29340

SPIRIT

Construction	Axminster
Pile content	80% wool and 20% nylon – BS 3655
Width	3.66 m (12ft) Broadloom – BS 3655
Pile weight	1180gm m ² / 34.8 oz sq yd – ISO 8543 (BS 4223)
Rows	31.5 per 10cm (8 per inch)
Pitch	27.6 per 10cm (7 per inch)
Backing	Jute / Polyester / Polypropylene
Backing treatment	SBR Latex
Total carpet thickness	9.00mm +/- 1.00mm (0.35 inches) ISO 1765 (BS 4223)
Total carpet weight	2236gm m ² +/-5% (65.9 oz sq yd) ISO 8543 (BS 4223)
Suitability for use	Heavy Contract
	The above specifications are subject to normal commercial tolerance. A fully-detailed specification for these products can be made available by application to The Wilton Carpet Factory Limited.
Flammability and fire classifications	Radiant Panel ISO 9239-1 IMO can be applied upon request
	 CE EN 14041 2004 Classification Cfl s1 (B Flooring)
Colour fastness	Wet 3-4 (Scale 1-5)
Installation and maintenance	Please refer to The Wilton Carpet Factory for full installation and maintenance advice.



WILTON CARPETS

The Wilton Carpet Factory Limited

Minster Street, Wilton, Salisbury
Wiltshire SP2 0AY

t 01722 746000 f 01722 742923

e sales@wiltoncarpets.com

www.wiltoncarpets.com

ISO 9001 (2015) Quality Assurance Certified



Designed
and made
in Britain

© Copyright The Wilton Carpet Factory Limited All copyright, design rights and intellectual property rights existing in our designs are and will remain the property of The Wilton Carpet Factory Limited. Any infringement of these rights will result in appropriate legal action. Colours are reproduced within the limits of the printing process.