



WILTON CARPETS



*Inspired design. Made to last.*

KINETIC



# KINETIC

Fizzing with energy, Kinetic features striking shades of grey, blue, green and gold in modern patterns made for forward-thinking leisure and hospitality spaces. Ranging from fine-line geometrics in Pulse, through to fractals in Gravity, Atomic and Radiate, and modern botanicals in Magnetic and Dynamic; Kinetic is a range that brings unwavering spirit to the floor. In 10 beautiful designs, Kinetic is Axminster woven from 80% wool and 20% nylon, in an enduring seven-row quality. Available in 14 days with no minimum order quantity.



magnetic 28611-300 1.16m HD



dynamic 28612-89 1.16m HD



signal 28613-73 94cm SM



pulse 28614-13 1.09m SM



atomic 28615-36 1.16m SM



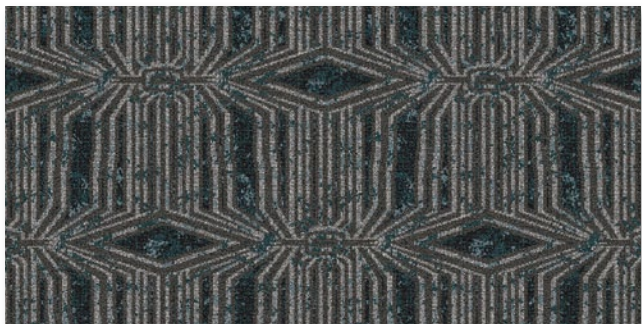
stellar 28616-89 98cm SM



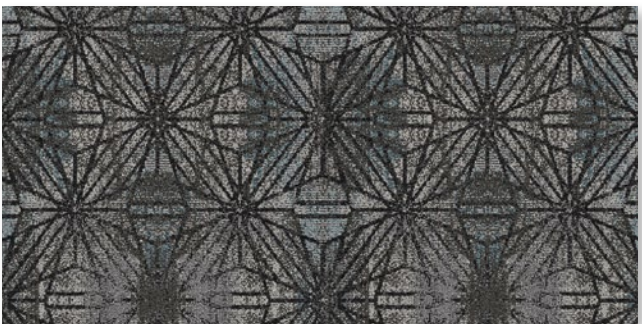
flux 28617-300 1.00m SM



radiate 28618-88 91cm SM




lunar 28619-77 91cm SM



gravity 28620-76 1.00m SM



# KINETIC

<b>Construction</b>	Axminster
<b>Pile content</b>	80% wool and 20% nylon – BS 3655
<b>Width</b>	3.66 m (12ft) Broadloom – BS 3655
<b>Pile weight</b>	1033gm m <sup>2</sup> / 30.5 oz sq yd
<b>Rows</b>	27.6 per 10cm (7 per inch)
<b>Pitch</b>	27.6 per 10cm (7 per inch)
<b>Backing</b>	Jute / Polyester / Polypropylene
<b>Backing treatment</b>	SBR Latex
<b>Total carpet thickness</b>	9.00mm +/- 1.00mm (0.35 inches) ISO 1765 (BS 4223)
<b>Suitability for use</b>	Heavy Contract
The above specifications are subject to normal commercial tolerance. A fully-detailed specification for these products can be made available by application to The Wilton Carpet Factory Limited.	
<b>Flammability and fire classifications</b>	Radiant Panel ISO 9239-1 IMO can be applied upon request
 CE EN 14041 2004 Classification Cfl s1 (B Flooring)	
<b>Colour fastness</b>	Wet 3-4 (Scale 1-5)
<b>Installation and maintenance</b>	Please refer to The Wilton Carpet Factory for full installation and maintenance advice.



## WILTON CARPETS

### The Wilton Carpet Factory Limited

Minster Street, Wilton, Salisbury  
Wiltshire SP2 0AY

**t** 01722 746000 **f** 01722 742923

**e** sales@wiltoncarpets.com

[www.wiltoncarpets.com](http://www.wiltoncarpets.com)

**ISO 9001 (2015)** Quality Assurance Certified



Designed  
and made  
in Britain

© Copyright The Wilton Carpet Factory Limited All copyright, design rights and intellectual property rights existing in our designs are and will remain the property of The Wilton Carpet Factory Limited. Any infringement of these rights will result in appropriate legal action. Colours are reproduced within the limits of the printing process.