



# WILTON CARPETS



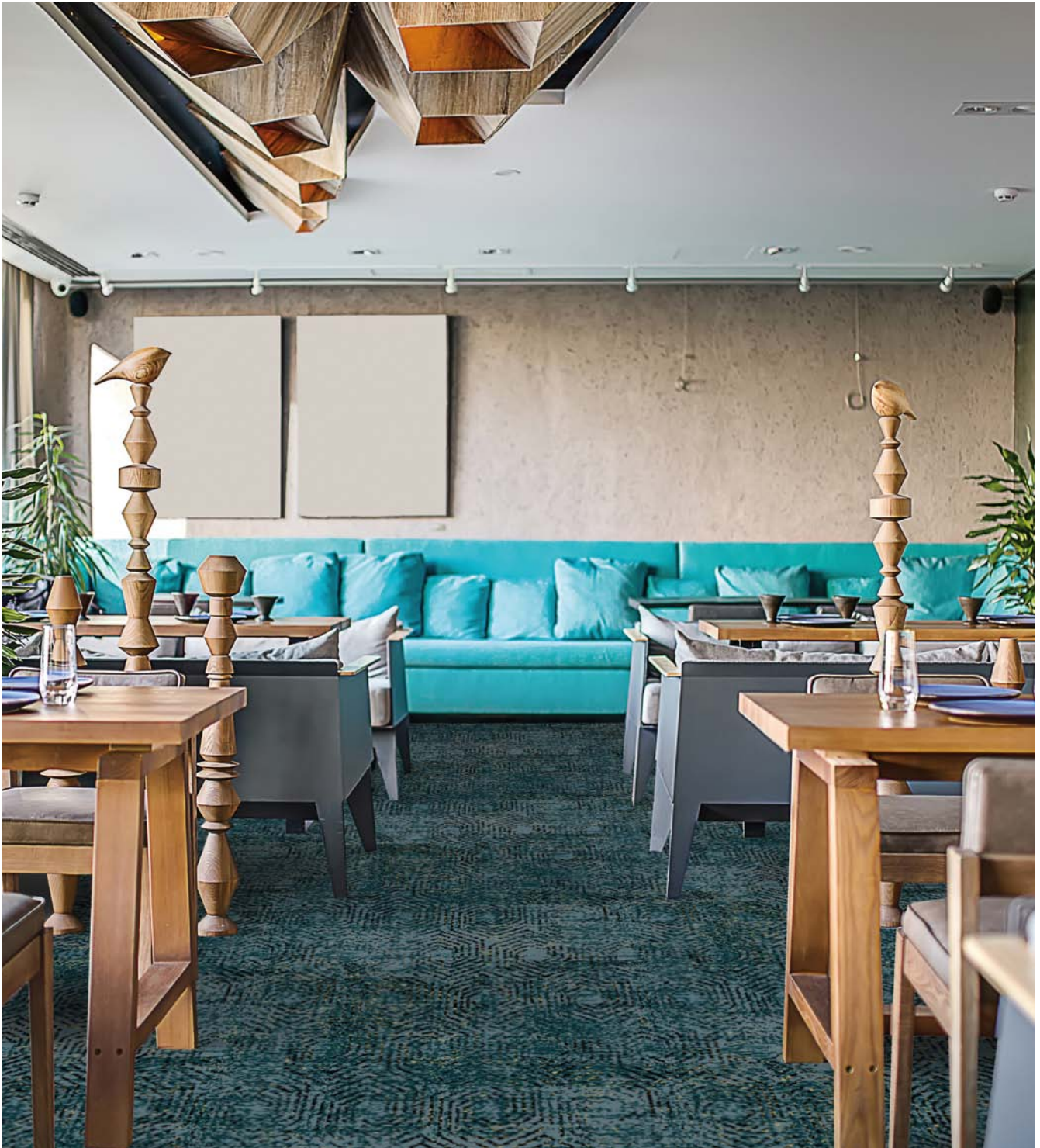
*Inspired design. Made to last.*

URBAN



# URBAN

Inspired by the decay and regeneration of the city landscape, Urban presents two designs featuring broken, diffracted geometric grids layered on an abstract background; Urban Terrain and Urban Contour. Each design is available in five modern colourways driven by the Creations palette and perfect for contemporary hospitality environments. Crafted in Wiltshire on Axminster looms in an 8-row wool-rich blend for flexibility and longevity, the Urban Ready to Go range is available in just 14 days.



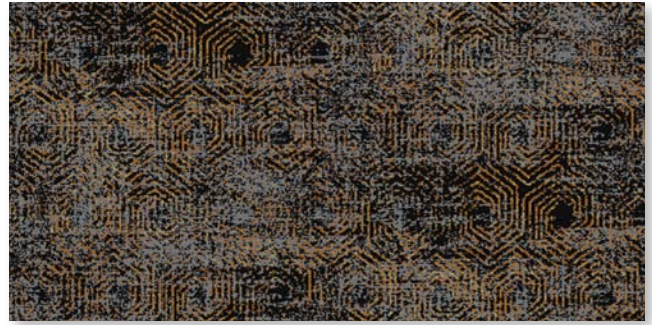


Pattern repeat: 91cm SM

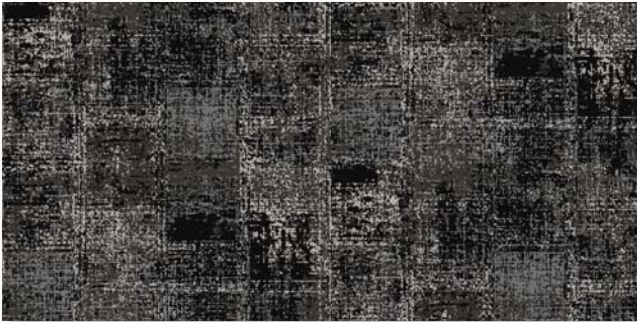
Pattern repeat: 91cm SM



URBAN TERRAIN **burnt copper** 28568-45



URBAN CONTOUR **demerara** 28573-46



URBAN TERRAIN **gun metal** 28569-77



URBAN CONTOUR **black** 28574-13



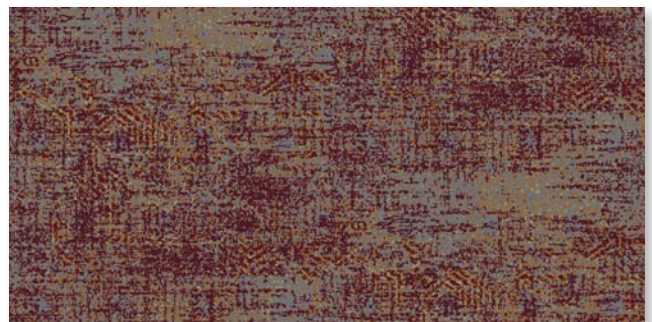
URBAN TERRAIN **fjord** 28570-300



URBAN CONTOUR **pebble** 28575-73



URBAN TERRAIN **ruby** 28571-93



URBAN CONTOUR **granite** 28576-76




URBAN TERRAIN **karma** 28572-89



URBAN CONTOUR **jade** 28577-36



# URBAN TERRAIN & URBAN CONTOUR

Construction	Axminster
Pile content	80% wool and 20% nylon – BS 3655
Width	3.66 m (12ft) Broadloom – BS 3655
Pile weight	1180gm m <sup>2</sup> / 34.8 oz sq yd – ISO 8543 (BS 4223)
Rows	31.5 per 10cm (8 per inch)
Pitch	27.6 per 10cm (7 per inch)
Backing	Jute / Polyester / Polypropylene
Backing treatment	SBR Latex
Total carpet thickness	9.00mm +/- 1.00mm (0.35 inches) ISO 1765 (BS 4223)
Total carpet weight	2236gm m <sup>2</sup> +/-5% (65.9 oz sq yd) ISO 8543 (BS 4223)
Suitability for use	Heavy Contract
	The above specifications are subject to normal commercial tolerance. A fully-detailed specification for these products can be made available by application to The Wilton Carpet Factory Limited.
Flammability and fire classifications	Radiant Panel ISO 9239-1 IMO can be applied upon request
	 CE EN 14041 2004 Classification Cfl s1 (B Flooring)
Colour fastness	Wet 3-4 (Scale 1-5)
Installation and maintenance	Please refer to The Wilton Carpet Factory for full installation and maintenance advice.



## WILTON CARPETS

### The Wilton Carpet Factory Limited

Minster Street, Wilton, Salisbury  
Wiltshire SP2 0AY

t 01722 746000 f 01722 742923

e sales@wiltoncarpets.com

[www.wiltoncarpets.com](http://www.wiltoncarpets.com)

ISO 9001 (2015) Quality Assurance Certified



Designed  
and made  
in Britain

© Copyright The Wilton Carpet Factory Limited All copyright, design rights and intellectual property rights existing in our designs are and will remain the property of The Wilton Carpet Factory Limited. Any infringement of these rights will result in appropriate legal action. Colours are reproduced within the limits of the printing process.