



# WILTON CARPETS



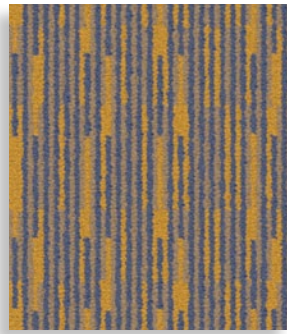
*Inspired design. Made to last.*

SIGNATURE

# SIGNATURE



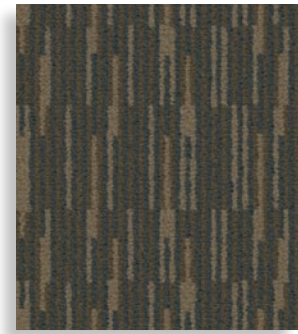
**calibri** 310/50239



**lucida** 311/50239



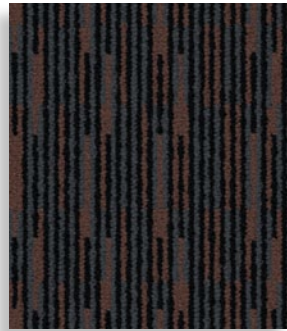
**kalinga** 312/50239



**verdana** 313/50239



**georgia** 314/50239




**kozuka** 315/50239



**palatino** 316/50239



**tahoma** 317/50239

<b>Construction</b>	Tufted
<b>Pile composition</b>	80% Wool 20% Nylon – BS 3655
<b>Gauge</b>	31.5 per 10cm (8 per inch)
<b>Pile weight</b>	1220gm/m <sup>2</sup> (36oz per sq yd) ISO 8543 – BS 4223 +/-10%
<b>Secondary back</b>	Synthetic
<b>Width</b>	4.00m (13ft 1 1/2") ISO 1765 – BS 4223
<b>Thickness</b>	9.00mm +/- 1mm (0.35 inches) ISO 1765 – BS 4223
<b>Total weight</b>	2257gm/m <sup>2</sup> (66.59oz per sq yd) ISO 8543 – BS 4223
<b>Use</b>	Heavy Contract
	The above details are subject to normal commercial tolerances. A fully detailed specification for this product can be made available by application to The Wilton Carpet Factory Limited.
<b>Fire test</b>	Radiant Panel ISO 9239-1 Smoke Generation EN ISO 11925-2
<b>Fire classification</b>	Cfl s1 CE EN 14041:2004
<b>Marine fire certification</b>	IMO & U.S.A. Coastguard Approved IMO Resolution A653 (16) IMO Resolution MSC 61 (67) Annex 1 part 5 & Annex 2
 <b>Colour fastness</b>	Wet 3-4 (Scale 1-5)
<b>Installation</b>	In accordance with BS 5325:2001 or any later revision – Installation of textile floor coverings – Code of practice.
<b>Maintenance</b>	Please refer to The Wilton Carpet Factory Ltd for full maintenance advice.



**WILTON CARPETS**

**The Wilton Carpet Factory Limited**

Minster Street, Wilton, Salisbury  
Wiltshire SP2 0AY

**t** 01722 746000 **f** 01722 742923

**e** sales@wiltoncarpets.com

[www.wiltoncarpets.com](http://www.wiltoncarpets.com)

**© Copyright The Wilton Carpet Factory Limited**

All copyright, design rights and intellectual property rights existing in our designs are and will remain the property of The Wilton Carpet Factory Limited. Any infringement of these rights will result in appropriate legal action. Colours are reproduced within the limits of the printing process.



Designed  
and made  
in Britain